



# MONTHLY MEMBERSHIP PROGRESS REPORT

District 8 S

Results as of: 5/31/2015

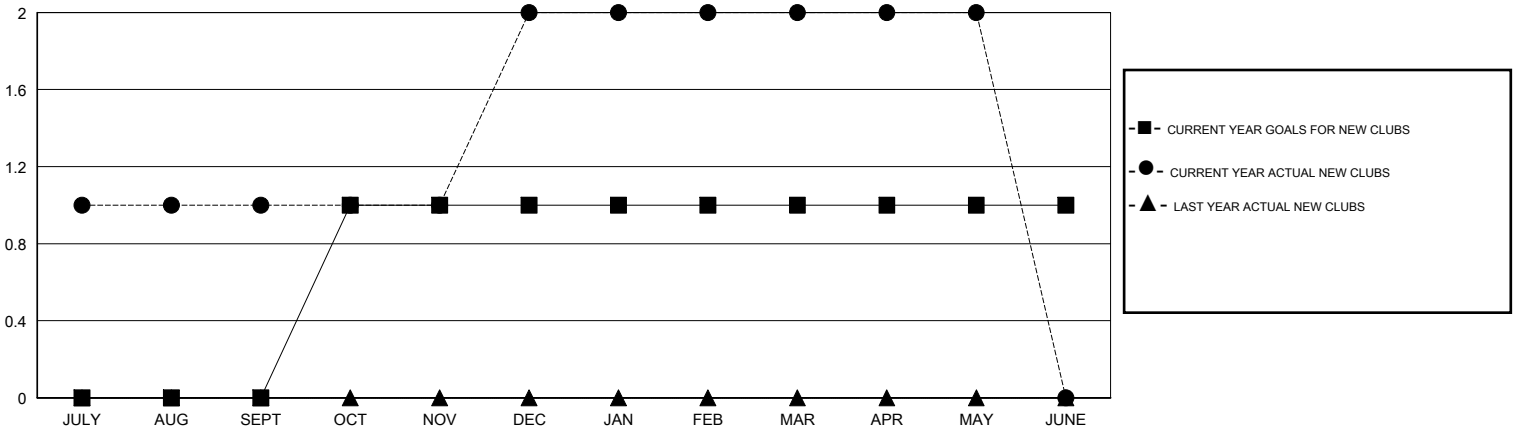
GMT: HAL GRIFFIN

LOCATION LOUISIANA

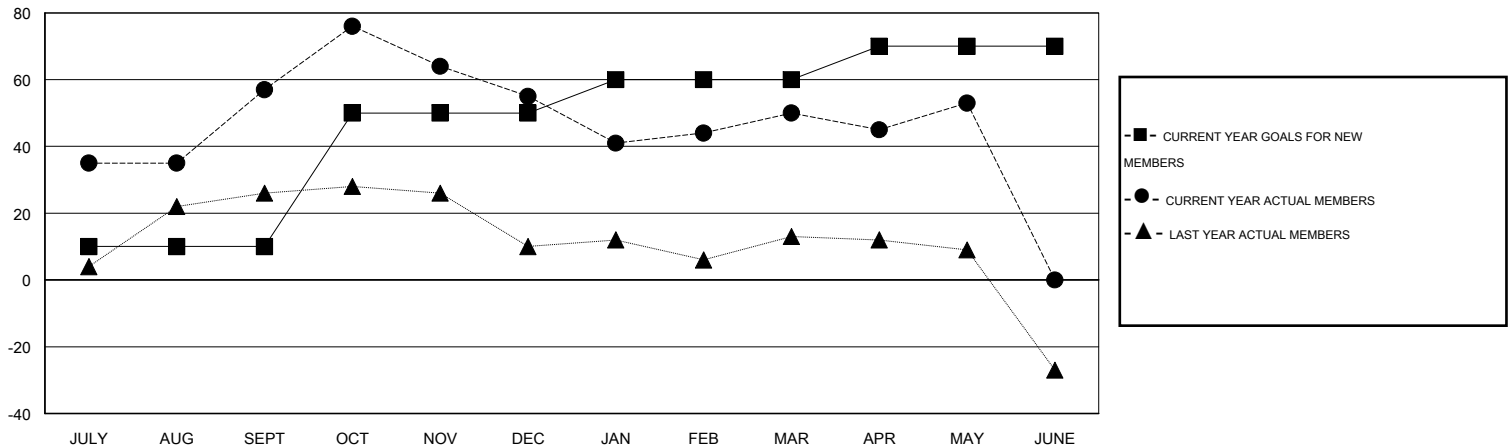
GMT CA 1

Clubs					Members				
RESULTS FOR 2014-2015					RESULTS FOR 2014-2015				
QUARTER	NEW CLUB GOAL	NEW CLUBS	DROPPED CLUBS	NET GAIN/LOSS	QUARTER	NEW MEMBER GOAL	CHARTER AND NEW MEMBERS ADDED	DROPPED MEMBERS	NET GAIN/LOSS
JULY/AUG/SEPT	0	1	0	1	JULY/AUG/SEPT	10	100	43	57
OCT/NOV/DEC	1	1	0	1	OCT/NOV/DEC	40	58	60	-2
JAN/FEB/MAR	0	0	1	-1	JAN/FEB/MAR	10	41	46	-5
APR/MAY/JUNE	0	0	0	0	APR/MAY/JUNE	10	21	18	3

GOALS AND ACTUAL NEW CLUBS CUMULATIVE



GOALS AND ACTUAL MEMBERS CUMULATIVE



DROPPED CLUBS: 1	29 CLUBS OF 41 ADDED 1 OR MORE NEW MEMBERS	<u>GENDER DISTRIBUTION</u>	
<u>DROPPED MEMBERS</u>		MALE	695 (58.70%)
DECEASED	<a href="#">CLICK HERE FOR HEALTH ASSESSMENT DATA</a>	FEMALE	489 (41.30%)
CLUB CANCELLED		FAMILY UNIT MEMBERS	352
OTHER		HEAD OF HOUSEHOLD	164
TOTAL		NON-HEAD OF HOUSEHOLD	188